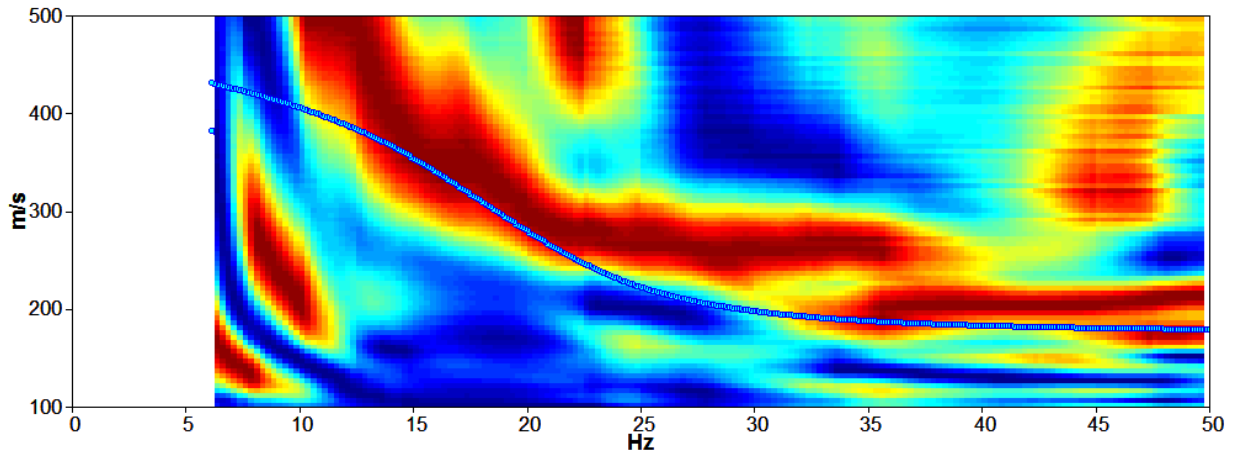


Start recording: 20/06/12 14:51:02 End recording: 20/06/12 15:07:03
Trace length: 0h16'00". Analyzed 94% trace (manual window selection)
Sampling frequency: 128 Hz

Channel labels: NORTH SOUTH; EAST WEST ; UP DOWN

THEORETICAL RAYLEIGH WAVE PHASE VELOCITY DISPERSION CURVE



Depth at the bottom of the layer [m]	Thickness [m]	Vs [m/s]	Poisson ratio
3.50	3.50	190	0.35
9.00	5.50	360	0.35
inf.	inf.	500	0.35

Vs(0.0-30.0) = 396m/s

